



# CONTINUOUS RAIN GUTTERS FROM CUSTOM-BILT METALS LAST A LIFETIME.\* GUARANTEED.

The quality of a continuous gutter system by Custom-Bilt Metals is more than surface deep. We know that a gutter does more than just move water. It protects your most precious investment: your home.

Each continuous rain gutter system from Custom-Bilt Metals is custom-made to the exact specifications of each house. The contractor measures, manufactures and installs each piece of the gutter system on-site. The gutter, end caps, miters, and screws are all color matched to give your system a completely finished appearance. While most jobs can be completed in a single day, the gutters are covered for a lifetime!\*

Aluminum and steel gutter products by Custom-Bilt Metals are available in a wide variety of colors and finished with Dura Coat XT-10. The surface of Dura Coat XT-10 is hard and strong, so it lasts long and resists scratching, fading, salt and pollution. The coating is exceptionally tough, yet flexible enough to be embossed and easily take a 1-T bend in roll forming.

Custom-Bilt Metals also offers copper systems for an old world, elegant look and Zinalume® Plus systems for a contemporary look.

\* Please see our website for warranty details. Natural Metals are covered by a separate performance warranty.

### PERFORMANCE CHARACTERISTICS

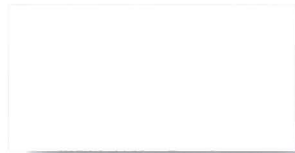
SPECIFICATION	TEST		RESULTS
ASTM D-523	60° Specular Gloss	10-80	Gardner 60° meter or equivalent.
NCCA II-12	Pencil Hardness	H-2H	No break in the film.
NCCA II-10	Post Forming 180° Bend	1-T to 2-T	No pick off with Scotch #610 tape.
ASTM D-2794	Reverse Impact, 60-80 Inch Pounds	Passes	No pick off with Scotch #610 tape.
ASTM G-53	Q.U.V. Weatherometer, 500 Hours	Passes	No objectionable chalking per ASTM D-659, color change per ASTM D-2244 or blistering per ASTM D-714.
ASTM D-2247	Humidity, 1000 Hours, At 100°F and 100% Humidity	Passes	Less than 5% No. 8 blisters.
ASTM B-117	Salt Spray 750 Hours, 5% Salt Solution	Passes	Less than 5% No. 6 blisters and less than 1/8" creep or tape off from the scribe per ASTM D-1654.
ASTM D-2244-89	45° So. Florida Exposure, 10 Years, Color Retention	Passes	No objectionable color change.
ASTM D-659-86	45° So. Florida Exposure, 10 Years, Chalk Resistance	Passes	No objectionable gloss loss or chalking.
EMMAQUA	Accelerated Weathering, 1,000,000 Langley's Sun 10 Arizona Exposure	Passes	No objectionable gloss loss, chalking, color change or blistering.

RAIN GUTTER PRODUCTS

**COLOR SELECTOR**



Low Gloss White\*



High Gloss White\*



Satin White\*



Almond\*



Classic Cream\*



Adobe Tan



Ivory\*



Heritage Cream\*



Peach



Pebblestone Clay\*



Woodbeige



Buckskin Brown\*



Beaver Brown\*



Bronze



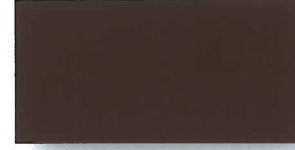
Weathered Copper\*



Musket\*



Weathered Bronze



Royal Brown\*



Colonial Red\*



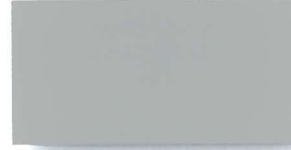
Black\*



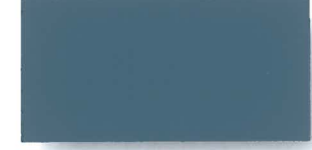
Storm Gray\*



Old Town Gray\*



Colonial Gray\*



C.B. Blue



Tahoe Blue\*



Sea Blue



Marine Green\*



Spanish Green



Leaf Green\*



Forest Green\*



Zincalume® Plus



Copper

**NATURAL METALS**

*Natural Metals are covered by a separate performance warranty. Please see our website for details.*

All colors are available in aluminum.  
Colors with (\*) are available in steel.

Colors shown here approximate finished colors as accurately as possible. However, colors may vary, and will also appear different on aluminum than they do on steel. Actual color samples on the appropriate metal choice are available upon request. Selection may vary by region. Please contact Custom-Bilt Metals for availability.